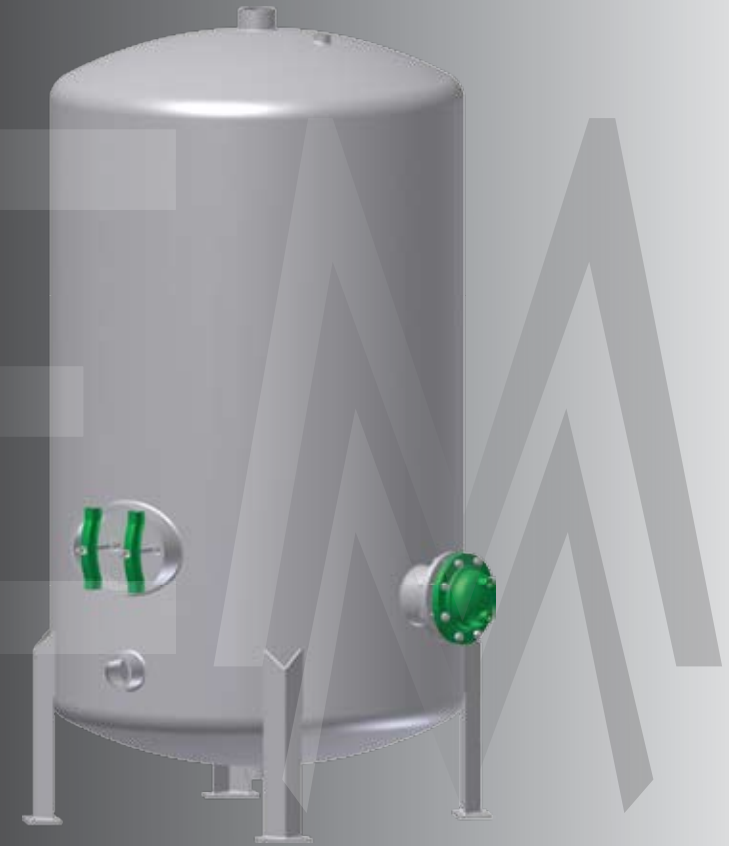


DOMESTIC HOT WATER TANKS & IMMERSION HEATERS

Catalogue Number	Capacity		Diameter	Overall Height	In & Out (npt)	Inspection Openings	Drain (npt)	PSV (npt)	Weight (Lbs) (Empty)
	USG's	Litres							
2436	90	341	24"	52"	2"	2 @ 2"	1 1/2"	1"	340
2448	114	432	24"	64"	2"	2 @ 2"	1 1/2"	1"	388
2460	137	519	24"	76"	2"	2 @ 2"	1 1/2"	1"	436
2472	161	610	24"	88"	2"	2 @ 2"	1 1/2"	1"	485
3048	187	708	30"	66"	2"	2 @ 2"	1 1/2"	1"	500
3060	223	844	30"	78"	2"	2 @ 2"	1 1/2"	1"	560
3072	260	984	30"	90"	2"	2 @ 2"	1 1/2"	1"	622
3084	297	1124	30"	102"	2"	2 @ 2"	1 1/2"	1"	682
3648	278	1052	36"	70"	3"	2 @ 2"	1 1/2"	1"	746
3660	331	1253	36"	82"	3"	2 @ 2"	1 1/2"	1"	843
3672	383	1450	36"	94"	3"	2 @ 2"	1 1/2"	1"	939
3684	436	1650	36"	106"	3"	2 @ 2"	1 1/2"	1"	1036
3696	489	1851	36"	118"	3"	2 @ 2"	1 1/2"	1"	1133
4260	462	1749	42"	85"	3"	12" x 16"	2"	1 1/2"	1110
4272	534	2021	42"	97"	3"	12" x 16"	2"	1 1/2"	1225
4284	606	2294	42"	109"	3"	12" x 16"	2"	1 1/2"	1338
4296	678	2567	42"	121"	3"	12" x 16"	2"	1 1/2"	1550
4860	619	2343	48"	88"	3"	12" x 16"	2 1/2"	1 1/2"	1592
4872	713	2699	48"	100"	3"	12" x 16"	2 1/2"	1 1/2"	1752
4884	807	3055	48"	112"	3"	12" x 16"	2 1/2"	1 1/2"	1913
4896	901	3411	48"	124"	3"	12" x 16"	2 1/2"	1 1/2"	2174
5460	803	3034	54"	91"	4"	12" x 16"	2 1/2"	1 1/2"	1953
5472	922	3490	54"	103"	4"	12" x 16"	2 1/2"	1 1/2"	2134
5484	1041	3941	54"	115"	4"	12" x 16"	2 1/2"	1 1/2"	2315
5396	1160	4391	54"	127"	4"	12" x 16"	2 1/2"	1 1/2"	2496
6027	1070	4050	60"	94"	4"	12" x 16"	2 1/2"	1 1/2"	2596
6084	1217	4607	60"	106"	4"	12" x 16"	2 1/2"	1 1/2"	2837
6096	1363	5160	60"	118"	4"	12" x 16"	2 1/2"	1 1/2"	2070
60108	1510	5716	60"	130"	4"	12" x 16"	2 1/2"	1 1/2"	3319
60120	1657	6272	60"	142"	4"	12" x 16"	2 1/2"	1 1/2"	3560
6672	1313	4970	66"	95"	4"	12" x 16"	2 1/2"	1 1/2"	3222
6684	1490	5640	66"	107"	4"	12" x 16"	2 1/2"	1 1/2"	3510
6696	1668	6314	66"	119"	4"	12" x 16"	2 1/2"	1 1/2"	3816
66108	1846	6989	66"	131"	4"	12" x 16"	2 1/2"	1 1/2"	4122
66120	2023	7658	66"	143"	4"	12" x 16"	2 1/2"	1 1/2"	4428
7272	1602	6064	72"	97"	5"	12" x 16"	2 1/2"	1 1/2"	2008
7284	1813	6863	72"	109"	5"	12" x 16"	2 1/2"	1 1/2"	4347
7296	2025	7666	72"	121"	5"	12" x 16"	2 1/2"	1 1/2"	4686
72108	2236	8464	72"	133"	5"	12" x 16"	2 1/2"	1 1/2"	5025
72120	2448	9267	72"	145"	5"	12" x 16"	2 1/2"	1 1/2"	5364

npt = nominal type threading
psv = pressure safety valve



EM Manufacturing Ltd.

11588 Kingston Street, Maple Ridge, BC Canada V2X 9J8

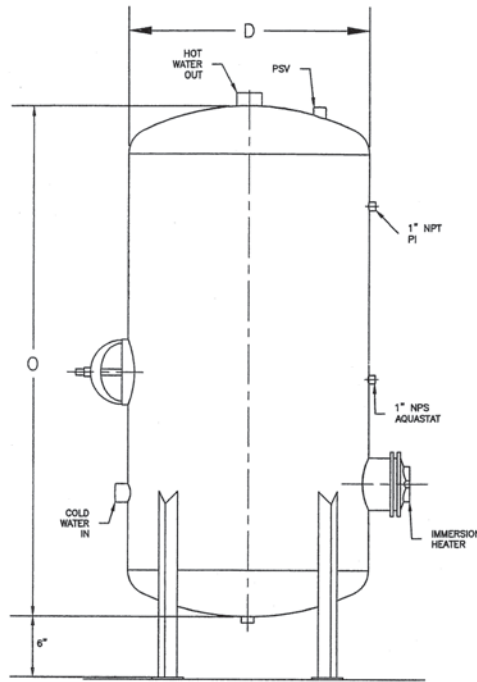
P: 604.460.2873 | F: 604.460.2874 | E: info@emmfg.com | W: www.emmfg.com

Specifications

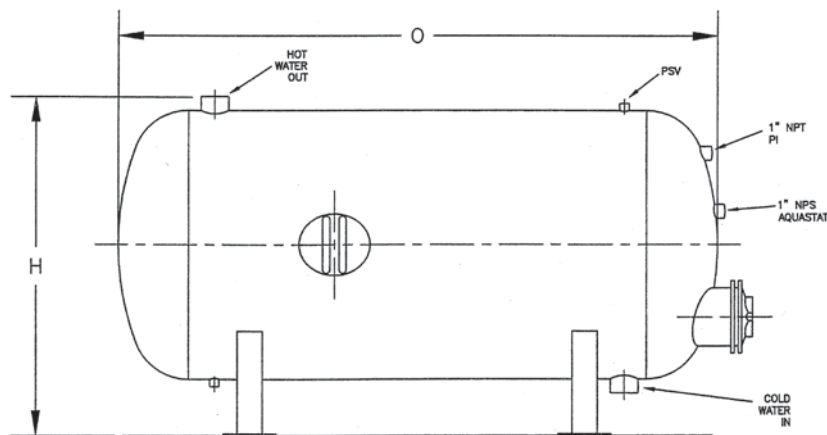
ACCREDITATION

EM's Hot water storage tanks are fabricated strictly in accordance with the requirements of the ASME code (section VIII for unfired pressure vessels). Tanks are manufactured to meet the specifications of any Canadian Provincial Boiler Inspection Department and are tested in the presence of an accredited inspector of the BC Boiler Inspection Department.

EM's immersion heaters comply with all applicable Canadian, Provincial and Municipal plumbing codes for potable water.



Vertical Tank with Legs and Heater



Horizontal Tank with Saddles and Heater

CERTIFIED SHOP DWGS AVAILABLE ON RECEIPT OF ORDER

EM Manufacturing Ltd. is a custom mechanical process equipment manufacturer located in Maple Ridge, BC. We are a diverse facility with many specialties. However, we have been particularly successful providing quality potable hot water storage tanks and immersion heaters to hospitals, public pools, shopping centres and other municipal, institutional and commercial buildings throughout the province..

Products

STANDARD POTABLE HOT WATER STORAGE TANKS

We manufacture our hot water storage tanks to all standard sizes (see back cover). Our standard tanks for potable water are composed of 304 stainless steel or cement lined carbon steel and are designed for pressures of 150 psig.

IMMERSION HEATERS

EM Manufacturing Ltd. supplies double wall or single walled U-Tube immersion heaters. EM immersion heaters are built to match both our customers' needs and equipment specifications. We ensure efficient heating and recovery time specific to the requirements of the hot water system.

CUSTOM TANKS & IMMERSION HEATERS

Based on request, EM will manufacture tanks outside standard sizes, dimension or pressure tolerances. Our extensive fabrication experience and familiarity with more exotic materials gives us the ability to manufacture our tanks out of any metal that meets code. EM will accommodate requests for single or double walled immersion heaters composed of a variety of materials including: copper, stainless steel, nickel, carbon steel and brass

MACHINED.

FABRICATED.

ENGINEERED.